

Long-term VHE γ -ray monitoring of bright blazars with a dedicated Cherenkov telescope

T. Bretz¹, M. Backes², D. Neise², W. Rhode², K. Mannheim¹, D. Dorner¹, D. Hadasch², J. K. Becker²

¹Universität Würzburg, Am Hubland, 97074 Würzburg, Germany

²Technische Universität Dortmund, Otto-Hahn-Straße 4, 44227 Dortmund, Germany

contact: tbretz@astro.uni-wuerzburg.de

We intend to set up a robotic imaging air Cherenkov telescope with low cost, but high performance design for remote operation. The goal is to dedicate this gamma-ray telescope to long-term monitoring observations of nearby, bright blazars at very high energies. We will (i) search for orbital modulation of the blazar emission due to supermassive black hole binaries, (ii) study the statistics of flares and their physical origin, and (iii) correlate the data with corresponding data from the neutrino observatory IceCube to search for evidence of hadronic emission processes. The observations will also trigger follow-up observations of flares with higher sensitivity telescopes such as MAGIC, VERITAS, and H.E.S.S. Common observations with the Whipple monitoring telescope are planned to start a future 24h-monitoring of selected sources. The telescope design is based on a full technological upgrade of one of the former telescopes of the HEGRA collaboration still located at the Observatorio Roque de los Muchachos on the Canarian Island La Palma (Spain). After this upgrade, the telescope will be operated robotic, its sensitivity will greatly be improved and a much lower energy threshold below 350 GeV will be achieved.

Introduction Since the termination of the HEGRA observations, the succeeding experiments MAGIC and H.E.S.S. have impressively extended the physical scope of gamma ray observations [1]. This became possible by lowering the energy threshold from 700 GeV to less than 100 GeV and increasing at the same time the sensitivity by a factor of five.

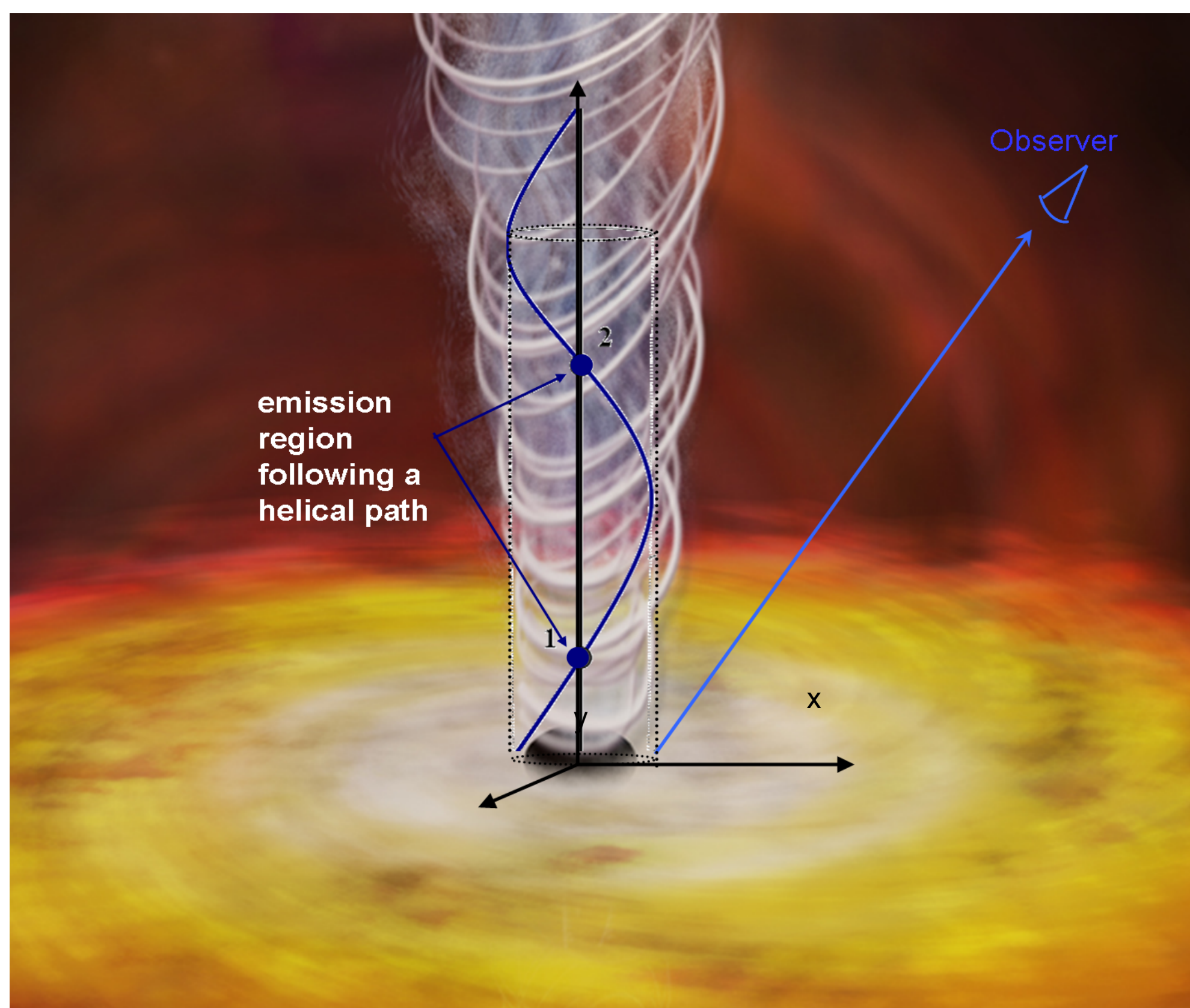
To fully exploit the discovery potential of the improved sensitivity, the discovery of new, faint objects has become the major task for the new telescopes. A diversity of astro-physical source types can be studied with these telescopes and therefore limits their availability for monitoring purposes of well-known bright sources.

But there are strong reasons to make an effort for the continuous monitoring of the few exceptionally bright blazars. This can be achieved by operating a dedicated monitoring telescope of the HEGRA-type, referred to in the following as DWARF (Dedicated multiWavelength Agn Research Facility).

Science case The variability of blazars, seen across the entire electromagnetic spectrum, arises from the dynamics of relativistic jets and the particle acceleration. Theoretical models predict variability arising from the interplay between jet expansion, particle injection, acceleration and cooling [2].

To overcome the limitations of biased sampling, a complete monitoring database for variability investigations of a few representative bright sources needs to be built up.

Operating a smaller but robotic telescope is an essential contribution to the next plans in ground-based gamma-ray astronomy. It is necessary to obtain know-how for the operation of future networks of robotic Cherenkov telescopes, e.g. a monitoring array around the globe or a single-place array like CTA or AGIS.



Artistic view of an Active Galactic Nucleus.

On top a sketch of a helical jet path caused by orbital modulation in a binary black hole system – a possible explanation for long-term variability of blazars. [3]

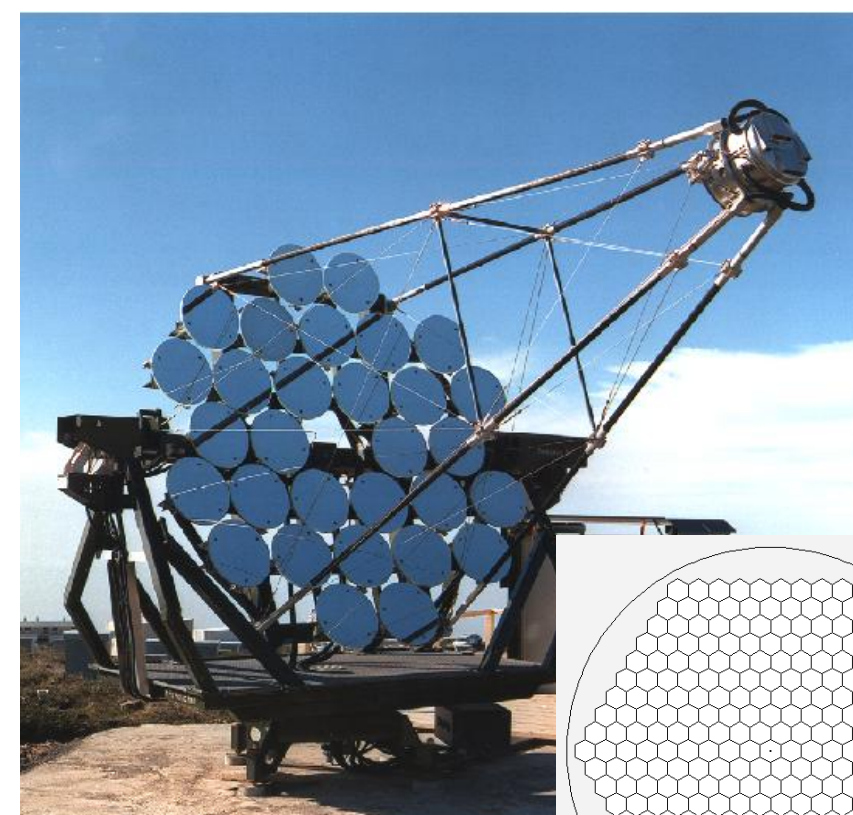
DWARF will run as a facility dedicated to long term monitoring of few selected blazars only, providing a maximum observation time for the program. At least one of the proposed targets will be visible any time of the year. The monitored sources will be:

Mrk421, Mrk501, 1ES2344+514, 1ES1959+650, H1426+428, PKS2155-304

Possible investigations:

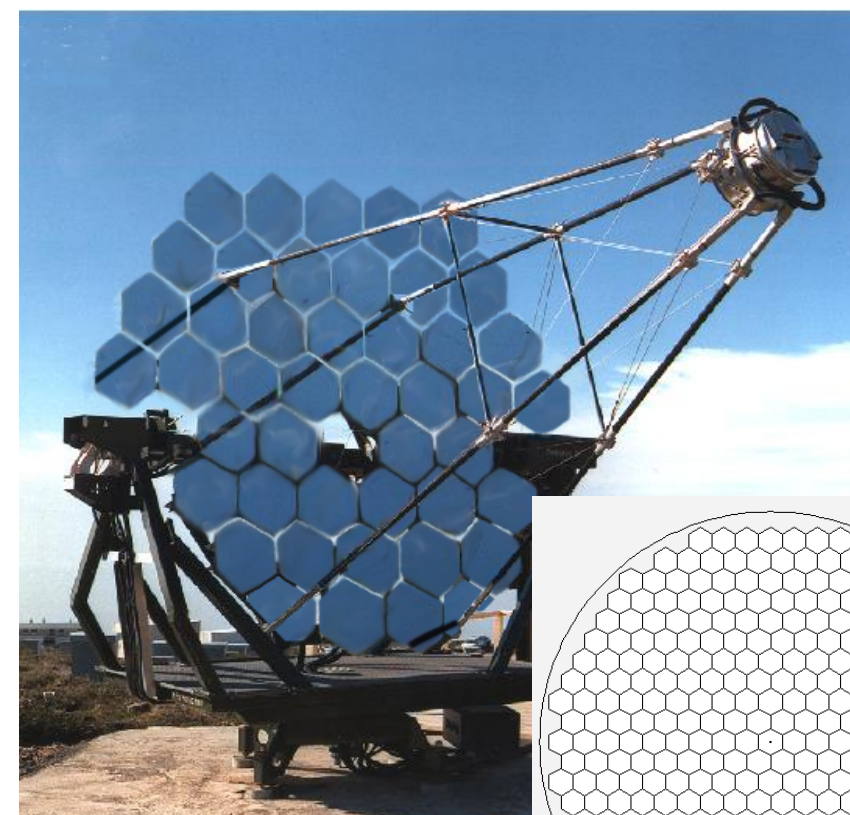
- Determination of the duty cycle, baseline emission, and power spectrum of flux variations and compare to variability properties in other wavelengths.
- Interpretation of the lightcurves using models for nonthermal emission from relativistically expanding plasma jets.
- Determination of the black hole mass and accretion rate from emission models and comparison to black hole masses arising from a possible orbital modulation and the Magorrian relation [4].
- When flaring states are discovered during the monitor program, MAGIC will issue a Target of Opportunity observation to obtain better time resolution.
- Correlate the arrival times of neutrinos detected by IceCube with simultaneous measurements of DWARF to test the hypothesis that flares in blazar jets are connected to hadronic emission processes [5,6].
- Constrain models of UHE cosmic ray origin and large-scale magnetic fields using the diffuse flux of escaping UHE cosmic rays obtained from AUGER or flux limits of neutrinos from IceCube, respectively.
- Multi-frequency observations together with the Metsähovi Radio Observatory and the optical Tuorla Observatory are planned. The measurements will be correlated with INTEGRAL and GLAST results, when available. X-ray monitoring using the SWIFT and Suzaku facilities will be proposed.
- The most ambitious scientific goal of this proposal is the search for signatures of binary black hole systems from orbital modulation of VHE gamma ray emission [7]. In case of a confirmation of the present hints in the temporal behaviour of Mrk501, gravitational wave templates could be computed with high accuracy to establish their discovery with LISA.

Technical setup



30 mirrors à 0.28m² = 8.5m²

271 Pixel à 0.25°
→ 4.3° FOV

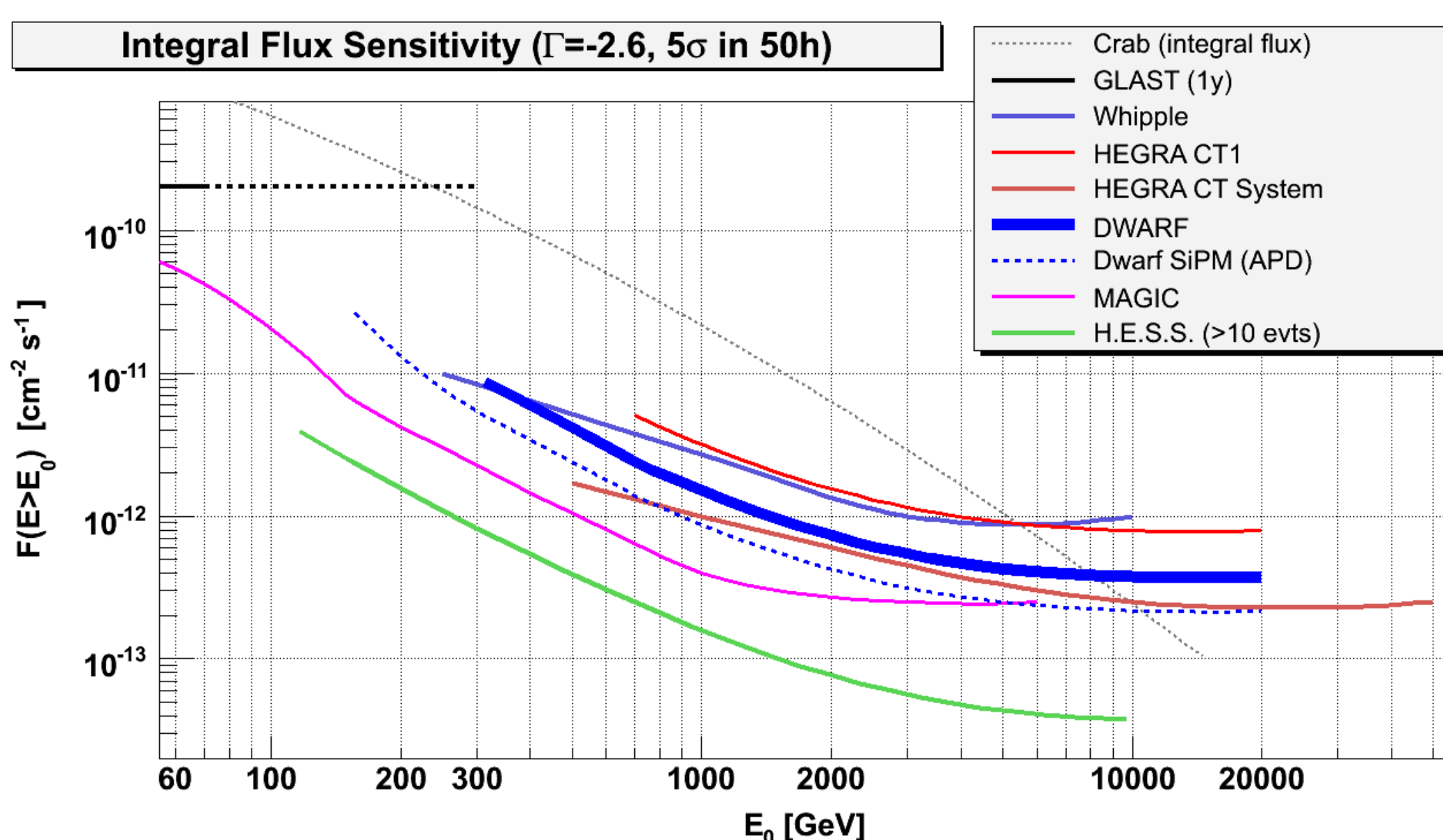


43 mirrors à 0.31m² ~ 13.5m²

313 Pixel à 0.26°
→ 5° FOV

Picture of the HEGRA CT3 when it was still operational and a schematic view of the camera plane.

Photomontage of the DWARF telescope and a schematic view of the camera plane assuming the PMT camera setup.



Integral flux sensitivity of current and former Cherenkov telescopes as well as the expectations for a dedicated long term monitoring telescope (DWARF), both with a PMT- and a G-APD-camera [9,10,11,12]

Telescope structure The former HEGRA telescope CT3 at the Observatorio del Roque de los Muchachos (ORM), now owned by the MAGIC collaboration, will be equipped for robotic operation to reduce costs and man power demands.

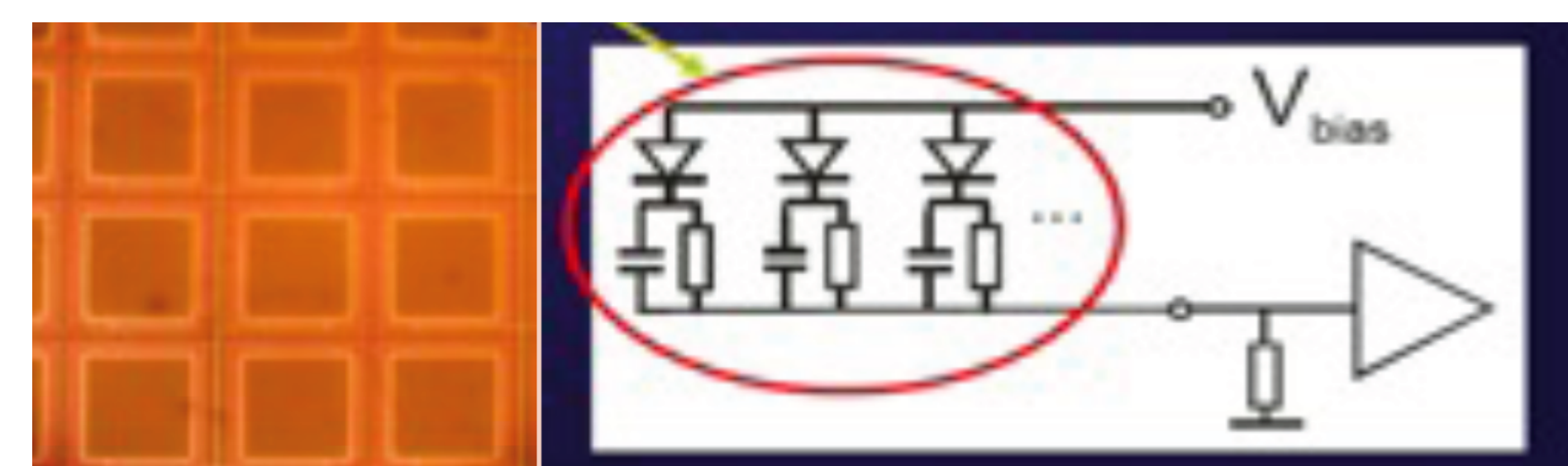
Camera One possible solution is a classical 313 pixel PMT-camera based on the experience with HEGRA and MAGIC. Photomultipliers with a diameter of 19mm and with a quantum efficiency improved by 20% with respect to the old CT3 system are considered. They ensure a granularity sufficient to guarantee good results even below the flux peak energy.

The preferred option is a novel camera based on Geigermode Avalanche Photo Diodes (G-APDs, also known as SiPMs or MPPCs) that is developed by a collaboration of Swiss institutes (ETH + University Zurich, PSI, University of Geneva, EPF Lausanne). G-APDs promise a highly enhanced photo detection efficiency compared to PMTs, allowing a lower energy threshold

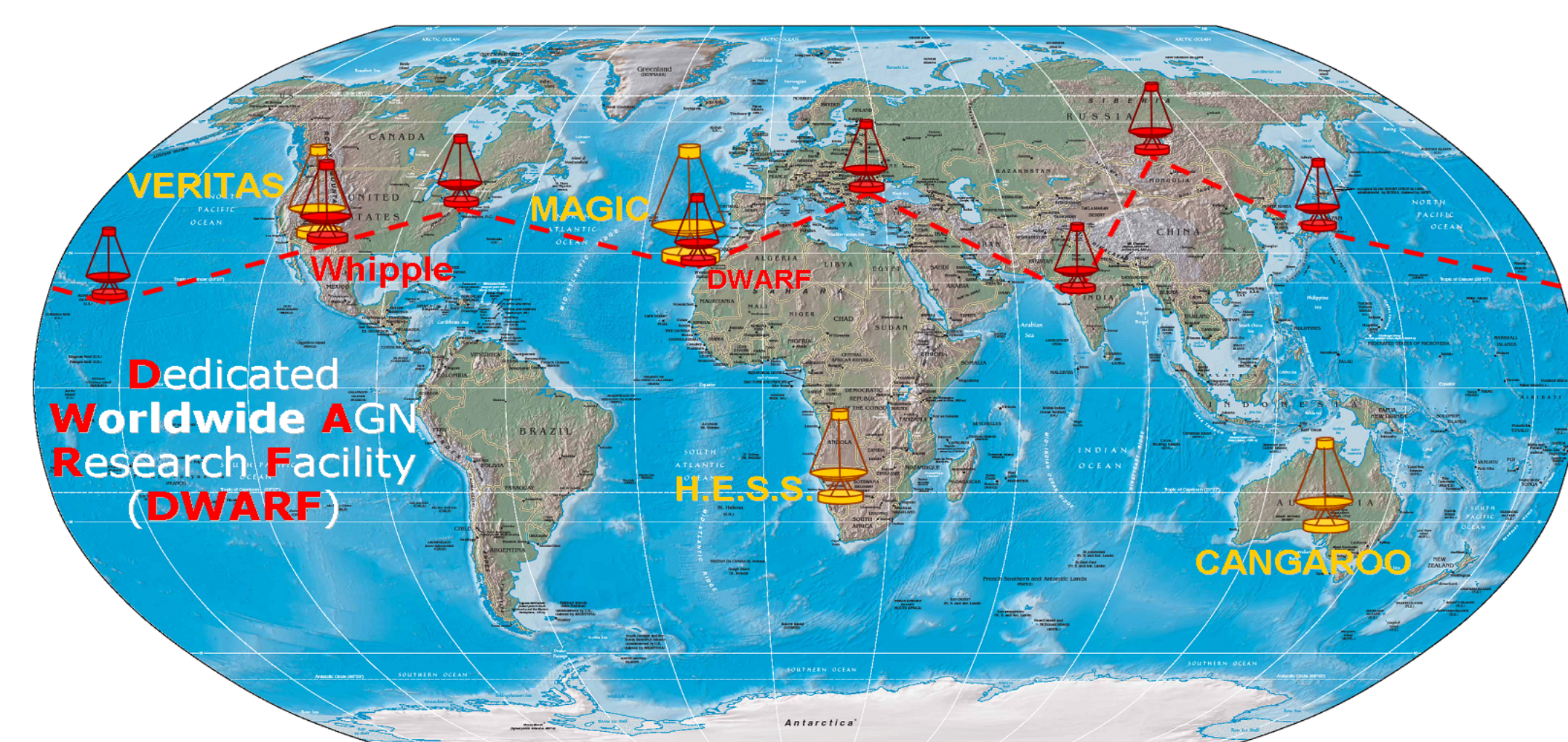
Camera support For either camera solution a further improvement of the quantum efficiency of about 8% can be achieved by applying a special coating on the photon detectors. By over-coating the protection window of the camera with an anti-reflex layer a gain in transmission of 5% is expected. Each PM will be equipped with a light-guide. The current design will be improved by using a high reflectivity mirror-foil, to reach a reflectivity in the order of 98%. In total this will gain another 15% in light collection efficiency compared to the old CT3 system.

Data acquisition For the data acquisition system a low-cost hardware readout based on an analog ring buffer (Domino II/III), will be used. The low power consumption will allow to include the digitization near the signal source which makes an analog signal transfer obsolete. By high sampling rates (1.2GHz), the over-all sensitivity will further be increased, because the short integration time allows for almost perfect suppression of noise due to night-sky background photons. Assuming conservatively storage of raw-data at a readout rate of 30Hz the storage space needed is less than 250 GB/month or 3 TB/year. The available automatic analysis package developed for MAGIC is modular and flexible, and can thus be used with minor changes for the DWARF project [8].

Mirrors The existing mirrors are replaced by new plastic mirrors. The cheap and light-weight material has formerly been used for Winston cones flown in balloon experiments. The mirrors are copied from a master, coated with a reflecting and a protective material. By a change of the mirror geometry the mirror area can be increased from 8.5m² to ~13.5m². This includes an increase of ~10% per mirror by using a hexagonal layout.



Design principle of a G-APD: a large number (100 -10 000 per mm²) of small photo diodes are connected in parallel.

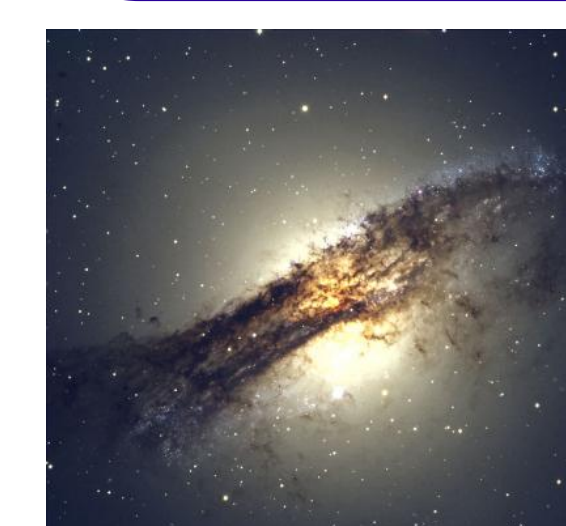


Possible distribution of Cherenkov telescopes in a future worldwide network for AGN monitoring.

Future extensions The known duty cycle of ~1000h/year for a Cherenkov telescope operated at La Palma limits the time-coverage of the observations. Therefore we propose a worldwide network of (<10) small scale Cherenkov telescopes to be build in the future, allowing 24h monitoring of the bright AGNs, a system so far unique in this energy range. The approved cooperation with the Whipple 10m-telescope is the first step in this direction.

Conclusion The setup of a small telescope dedicated for long-term AGN monitoring is easily feasible. Such an activity is motivated by a variety of physical questions to be answered by the integration of this instrument in multiwavelength observations.

Acknowledgements We would like to thank Eckart Lorenz, Riccardo Paoletti, Maria Victoria Fonseca and José Luis Contreras for intense discussions and Christian Spiering, Trevor Weekes, Leo Takalo, Merja Tornikolski, Brenda Dingus, Maria Magdalena Gonzalez Sanchez and the MAGIC collaboration for helpful support.



Workshop on Blazar Variability across the Electromagnetic Spectrum

École polytechnique, Palaiseau
April 22th-25th 2008

References

- [1] Teshima, M. TeV Particle Astrophysics II, Madison, August 2006. Presentation at www.icecube.wisc.edu/tev/
- [2] Böttcher, M., 2003, AAS, 202, 1805
- [3] Rieger, F.M. & Mannheim, K., 2001, High Energy Gamma-Ray Astronomy, American Institute of Physics (AIP) Proceedings, 558, 716
- [4] Magorrian et al., 1998, AJ, 115, 2285
- [5] Mücke, Protheroe, Engel, Rachen & Stanev, 2003, Aph, 18, 393
- [6] Mannheim, K., 1993, A&A, 269, 67
- [7] Rieger, F.M. & Mannheim, K., 2000, A&A, 353, 473
- [8] Bretz, T., 2005, Proceedings of the 29th International Cosmic Ray Conference, Pune, India, 315
- [9] A. Moralejo, 2004, internal MAGIC report: MAGIC sensitivity under 500 GeV
- [10] http://magic.mppmu.mpg.de/physics/results/released/sensit.jpg: MAGIC sensitivity above 500 GeV
- [11] Magnussen, N. et al., 1998, Proceedings of the 36th INFN ELOISATRON Workshop on NEW DETECTORS, Erice: HEGRA array sensitivity
- [12] Vassiliev, V. et al., 1999, Proceedings of the 26th International Cosmic Ray Conference, Salt Lake City, Utah, USA, 299: Whipple sensitivity